



NAM PHAT SHIPBUILDING AND SHIPPING CORPORATION



GENERAL INTRODUCTION

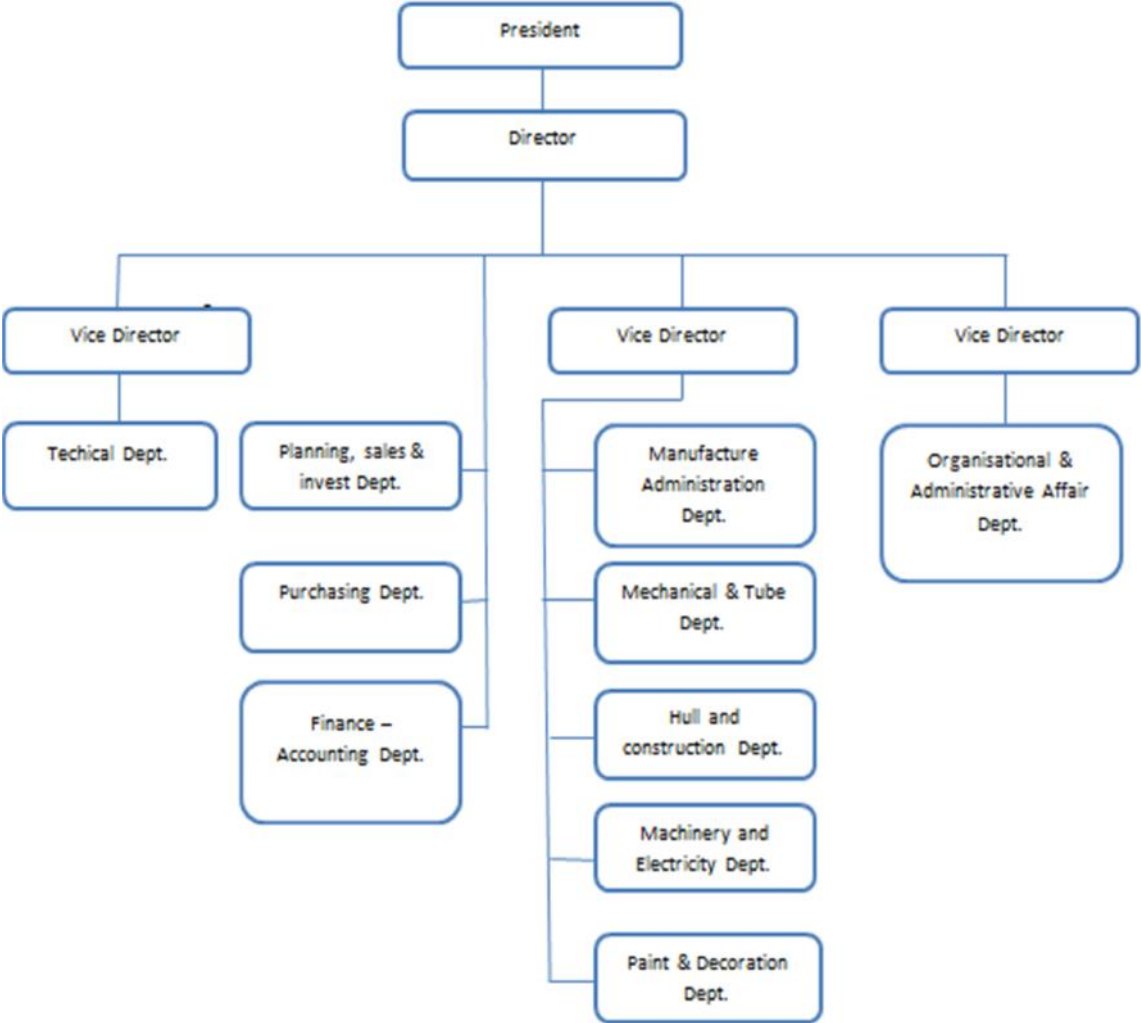
Nam Phat Ship building and Shipping Joint Stock Company is one of 5 member units of Nam Phat Group established in 2010, its main activities are in the following areas:

- Newly built cargo ships with a tonnage of up to 10,000 DWT;
- New construction of specialized ships: fishing ship, SAR, tugboat, dredger ...;
- Processing steel structures;
- Repairing and converting ships to 6,500DWT
- Warehousing and loading and unloading services
- Seaports receive ships of 10,000 DWT
- Domestic and international shipping
- Domestic and international maritime brokerage services

The factory was built in Ha An, Quang An, about 5 nautical miles from the seaport, on an area of 20 hectares, with 4 hectares of water area, modern, synchronous infrastructure. The original number of staff was about 400 workers.



ORGANIZATIONAL STRUCTURE



NAM PHAT SHIPYARD

CERTIFICATION AND QUALITY MANAGEMENT SYSTEM

The quality management system of the factory has been checked, assessed and certified to comply with ISO 9001-2008 standards.

Vietnam Register Department (VR) has checked and issued a certificate of approval of production facilities for the Plant in the field of ship building and repair.

Standard systems applied:

- IACS
- Standard for building and repairing ships of the factory.
- Rules and Regulations of Vietnam Register and international registrations
- Approving welding process and welder certificate:
- The entire welding process at the factory has been approved by the Vietnam Register
- Half of employees of the Company is checked and certified by the Vietnam Register.



FACTORY

The main factories of the company include:

Shipyard workshop: L x B = 80mx100m, divided by area according to the construction stage, including:

- Factory cleaning and priming steel plate with automatic lines:
- Cutting area is equipped with 02 CNC steam cutters and Plasma cutting machines
- Curved bending and processing area is equipped with 01: 3-reroller bending machine, hydraulic press 500 tons and many other production machines
- Parts for processing details, detail assemblies (grinding, assembly, welding).
- General assembly area (assembly, welding, fitting, grinding and painting).
- The factory is equipped with equipment for lifting 5-30 tons with a total truck of 60 tons, allowing the construction of sections of up to 60 tons to be fully outfitting in the factory, limiting the impact of the weather.

Mechanical - pipe factory: L x B = 95m x 80m

- The factory is fully equipped with necessary equipment for construction of piping systems and mechanical details such as lathe, mechanical cutting machine ...
- The pipe details are processed and the pressure test completed at the factory before installing or galvanized ...
- The factory is equipped with a pipe washing system with equipment system to test the pressure of the pipe system.

Machine – electricity factory: L x B = 95m x 20 m

- The factory is equipped with equipment to serve the processing of pre-outfitting, inspection and periodic maintenance of machinery, equipment and machine assemblies before installation.

Momentum and dock: After finishing construction and painting in the workshop, the sections will be assembled at the skid and ship sides to launch. The factory currently has 02 slopes including:

- Momentum number 01:30 m (wide) x 140 m (long); slope: 1:10; Lifting capacity: 10,000 T
- Momentum number 02:30 m (wide) x 160 m (long); slope: 1:10; Lifting capacity: 5,000 T

These two ramps are equipped with two 200-ton crane and one 120-ton base crane, allowing for a large combination of modules before the momentum.

Dock: 30 m (wide) x 120 m (long), equipped with a 30 ton crane, industrial gas and compressed air system, can receive repairs of ships of under 5,000 tons.

NAM PHAT SHIP CORP.

Outfitting berth: Dedicated port serving the 300m long plant, equipped with a 40-ton base crane, a range of 28m and an industrial gas system, electricity and a synchronous fresh water supply system. The factory has 01 1x750HP towing vessel for towage.

Machining and cutting center: L x B = 160m x 120m, equipped with gantry crane system of 10-30 tons, with cutting machine system from 8 to 16 cups and many other auxiliary machines, qualified fulfill production needs.



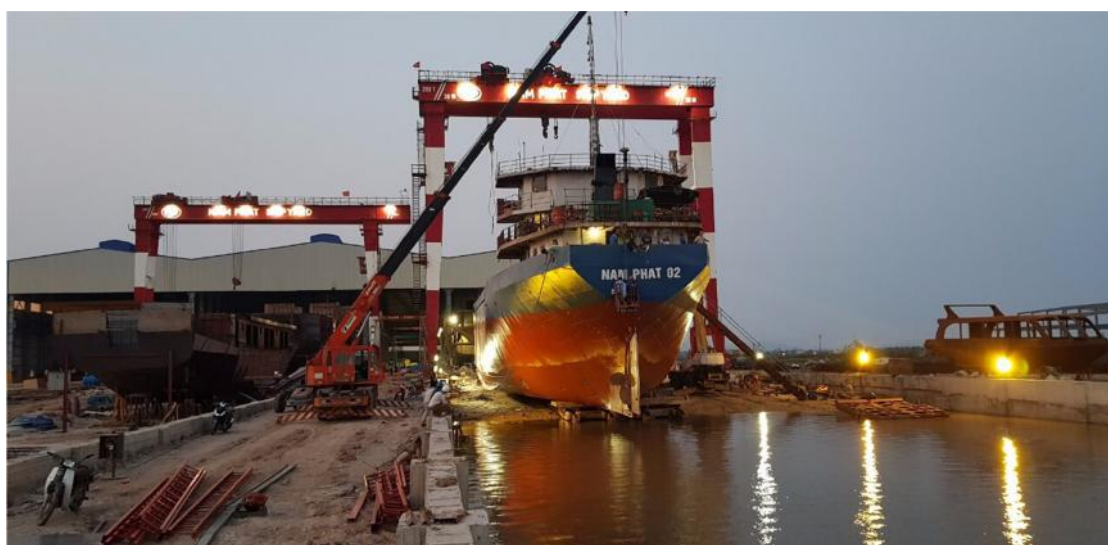
SHIP REPAIR

Momentum serving the repair and building of ships of under 6,500DWT are equipped with synchronous equipment systems including:

- 60 ton hydraulic winch: 03 pieces
- System when compressing for cleaning and painting the hull.
- Auxiliary systems such as industrial gases, electrical systems and lighting ...

The company has successfully repaired and converted 10 ships of 800-3,500 DWT.







OCEAN SHIPPING

INTRODUCTION

In 2010, we introduced the first ship Nam Phat 01 to enter the shipping market. Since then, Nam Phat continues to put 4 more ships into operation. In the field of shipping, Nam Phat is considered one of the major shipping companies with a stable customer network, with an expanding market share. The company has also established the "Namphatship" brand in the domestic transport market as well as the international transport market, including domestic and export goods transport activities of Vietnam and other Southeast Asia countries.

Always trying to actively invest in innovation to meet the demand for changing of the market, Nam Phat provides customers with products and services with the following principles:

- Providing appropriate and reliable maritime services
- Offer products at the most competitive prices.
- Meet the legitimate requirements of enthusiastic, fast and flexible.
- Provide stable and high frequency schedules. Be sure to transport the goods to a safe place, on time.
- Business activities comply with the laws of the Vietnamese government, domestic and international maritime law.
- Healthy business activities, making profits, fulfilling obligations to the state and society.

Not only is the ship fleet owned and exploited by the company, Nam Phat also associates with domestic and foreign ship owners to hire long-term, meet the needs and provide the convenience of customers.

Until now, Nam Phat is a reliable shipping agency for many domestic and foreign businesses and customers, including: Hoa Sen Group, Hoa Phat Group, China Steel Sumikin Vietnam Corporation., Steel Searcher Vietnam Co., Ltd., Shengli Vietnam Special Steel Co., Ltd., Vietnam Coal and Mineral Industries Group ...

The volume of goods transported by Nam Phat is about 80,000 tons / month, diverse in types of goods: iron and steel, corrugated iron, machinery, coal, ore, wood, piles, flour products (starch, cement) bamboo shoots, palm bran) ...

With a shipping team who are professionally trained, enthusiastic and responsible and enthusiastic management team, Nam Phat always tries to build the brand image of the company with the motto: Customers' s satisfaction is the foundation for existence and development, ensuring to provide customers with professional service with the best quality and price.

NAM PHAT'S VESSELS



MV. Nam Phat Star

Vessel Type: GENERAL CARGO

Deadweight: 3084 t

Gross Tonnage: 1638

Length Overall x Breadth Extreme: 79.92m x 12.62m

Year Built: 2011

Flag: VIETNAM

Home port: HAIPHONG



MV. Nam Phat 01

Vessel Type: GENERAL CARGO

Deadweight: 1924,6 t

Gross Tonnage: 999

Length Overall x Breadth Extreme: 67.5m x 11.02m

Year Built: 2010

Flag: VIETNAM

Home port: HAIPHONG



MV. Nam Phat 02

Vessel Type: GENERAL CARGO

Deadweight: 3090,3 t

Gross Tonnage: 1598

Length Overall x Breadth Extreme: 79.8m x 12.82m

Year Built: 2010

Flag: VIETNAM

Home port: HAIPHONG



MV. Nam Phat Queen

Vessel Type: GENERAL CARGO

Deadweight: 3242,4 t

Gross Tonnage: 1599

Length Overall x Breadth Extreme: 74,82m x 12.6m

Year Built: 2017

Flag: VIETNAM

Home port: HAIPHONG



MV. Nam Phat 18

Vessel Type: DRY BULK CARGO

Deadweight: 1270,0 t

Gross Tonnage: 835

Length Overall x Breadth Extreme: 64.1m x 12.05m

Year Built: 2018

Flag: VIETNAM

Home port: HAIPHONG

MARINE TRANSPORT SERVICES



MARINE TRANSPORT SERVICES



DELIVERY, TALLY AND ARRANGING OF GOODS



TRANSPORT AGENCY, SHIPPING BROKERAGE